

EXISTING
BLOOMFIELD
INTERCHANGE

Legend:

- PROPOSED AREAS OF PUBLIC LIGHTING
- EXISTING PUBLIC LIGHTING TO BE RETAINED

R:\MCT0597 - N28 Upgrade Scheme - Engineering Consultancy Services\6.0 Drawings\PL\MCT0597\PL0001-07.dwg

Includes Ordnance Survey Ireland data reproduced under OSI Licence number Cork County Council 2010/2009/2CMA/ Cork County Council
Unauthorised reproduction infringes Ordnance Survey Ireland and Government of Ireland copyright. © Ordnance Survey Ireland: 2017

Client





Cork County Council
National Roads Office,
Richmond,
Glanmire,
Co. Cork. Tel. No: (021) 4821046
Fax. No: (021) 4866209

General Notes

- (i) This drawing is the property of RPS Consulting Engineers, it is a confidential document and must not be copied, used, or its content divulged without prior written consent.
- (ii) All Levels refer to Ordnance Survey Datum, Malin Head.
- (iii) DO NOT SCALE: use figured dimensions only, if in doubt ask.
- (iv) Hard copies, dwf and pdf will form a controlled issue of the drawing. All other formats (dwtg etc) are deemed to be an uncontrolled issue and any work carried out based on these files is at the recipients own risk. RPS will not accept any responsibility for any errors from the use of these files, either by human error by the recipient, listing of the un-dimensioned measurements, compatibility with the recipients software, and any errors arising when these files are used to aid the recipients drawing production, or setting out on site.

No.	Date	By	Amendment / Issue	App
F01	May '17	LB	FINAL ISSUE	

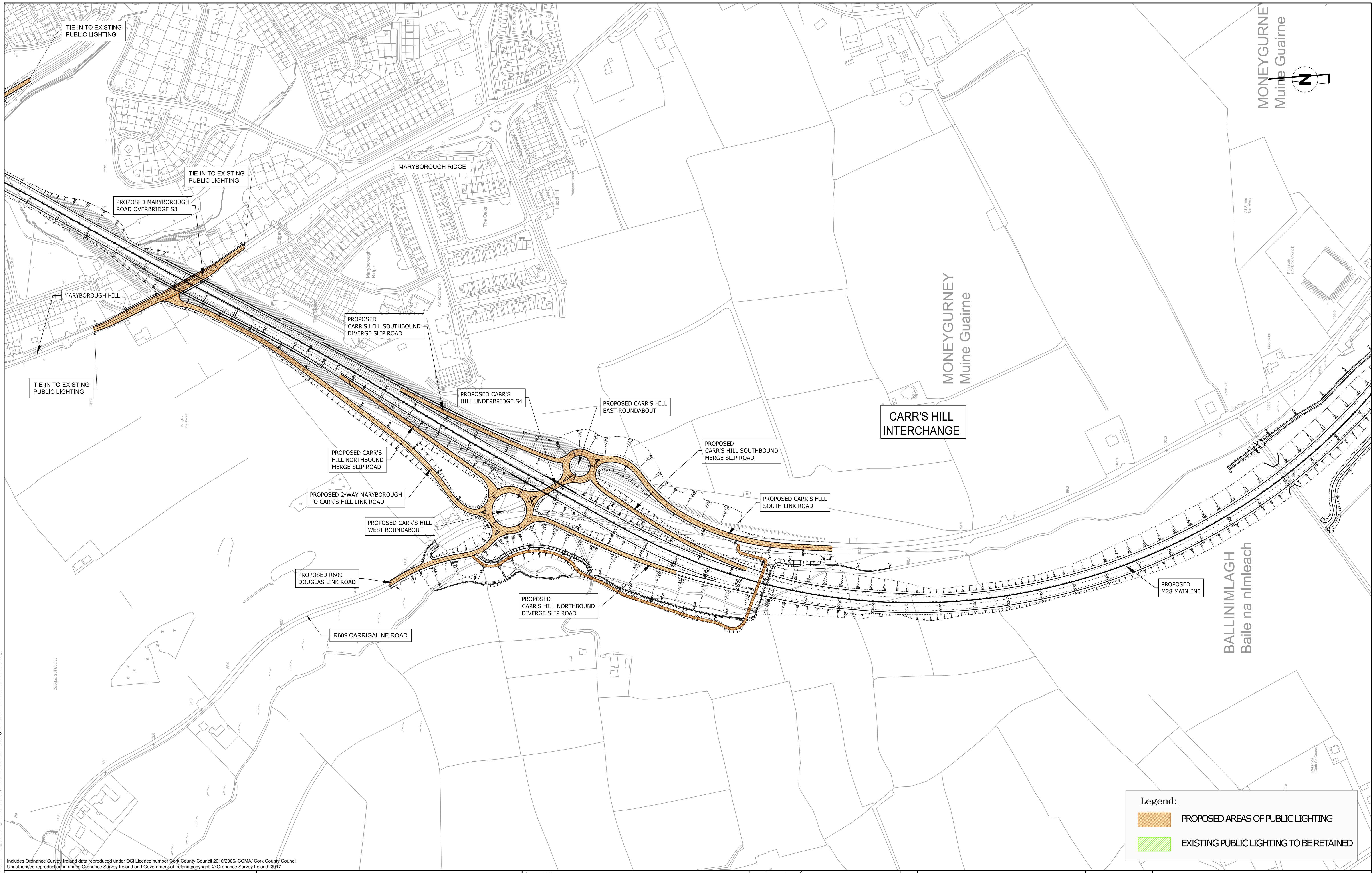


Innishmore
Ballincollig
Co. Cork
Ireland

T +353 21 4665900
W www.rpsgroup.com/ireland
E ireland@rpsgroup.com

Drawn	KT
Checked	LB
Approved	LB
Date	Apr. 2015
Scale	1:5000 @ A3 1:2500 @ A1
Job No.	MCT0597

Project	M28 CORK TO RINGASKIDDY PROJECT		
Title	PROPOSED PUBLIC LIGHTING Sheet 1 of 5		
File Ref.	MCT0597PL0001-07.dwg	Dwg. No.	PL0001
Rev.	F01		



Legend:


- PROPOSED AREAS OF PUBLIC LIGHTING
- EXISTING PUBLIC LIGHTING TO BE RETAINED

Includes Ordnance Survey Ireland data reproduced under OSI Licence number Cork County Council 2010/2006/ CCMA/ Cork County Council
 Unauthorised reproduction infringes Ordnance Survey Ireland and Government of Ireland copyright. © Ordnance Survey Ireland, 2017

Client



TII
 Bonneagar Iompair Éireann
 Transport Infrastructure Ireland



Cork County Council
 National Roads Office,
 Richmond,
 Glanmire,
 Co. Cork. Tel. No: (021) 4821046
 Fax. No: (021) 4866209

General Notes

- (i) This drawing is the property of RPS Consulting Engineers, it is a confidential document and must not be copied, used, or its content divulged without prior written consent.
- (ii) All Levels refer to Ordnance Survey Datum, Malin Head.
- (iii) DO NOT SCALE, use figured dimensions only, if in doubt ask.
- (iv) Hard copies, dwf and pdf will form a controlled issue of the drawing. All other formats (dvg etc) are deemed to be an uncontrolled issue and any work carried out based on these files is at the recipients own risk. RPS will not accept any responsibility for any errors from the use of these files, either by human error by the recipient, listing of the un-dimensioned measurements, compatibility with the recipients software, and any errors arising when these files are used to aid the recipients drawing production, or setting out on site.

No.	Date	By	App	Amendment / Issue
F01	May '17	KT	LB	FINAL ISSUE

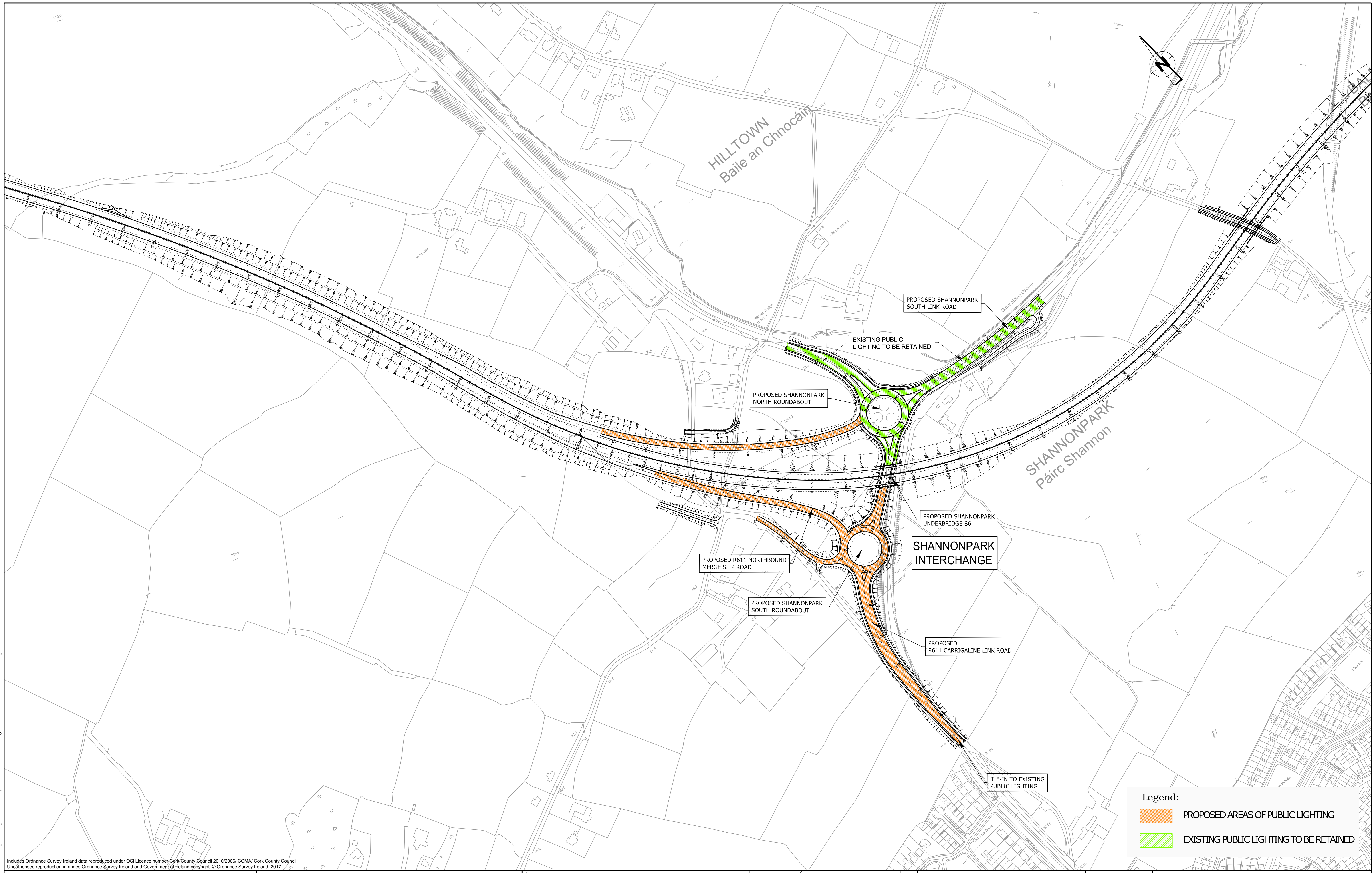


RPS
 Innishmore
 Ballincollig
 Co. Cork
 Ireland

T +353 21 4665900
 W www.rpsgroup.com/ireland
 E ireland@rpsgroup.com

Drawn	KT	Project	M28 CORK TO RINGASKIDDY PROJECT		
Checked	LB	Title	PROPOSED PUBLIC LIGHTING		
Approved	LB		Sheet 2 of 5		
Date	Apr. 2015	Job No.	MCT0597	File Ref.	MCT0597PL0001-07.dwg
Scale	1:5000 @ A3 1:2500 @ A1	Drg. No.	PL0002	Rev.	F01

R:\MCT0597 - N28 Upgrade Scheme - Engineering Consultancy Services\6.0 Drawings\PL\MCT0597PL0001-07.dwg




Includes Ordnance Survey Ireland data reproduced under OSI Licence number, Cork County Council 2010/2006/ CCMA/ Cork County Council
 Unauthorised reproduction infringes Ordnance Survey Ireland and Government of Ireland copyright. © Ordnance Survey Ireland, 2017

Client



TII
 Bonneagar Iompair Éireann
 Transport Infrastructure Ireland



Cork County Council
 National Roads Office,
 Richmond,
 Glanmire,
 Co. Cork. Tel. No: (021) 4821046
 Fax. No: (021) 4866209

General Notes
 (i) This drawing is the property of RPS Consulting Engineers, it is a confidential document and must not be copied, used, or its content divulged without prior written consent.
 (ii) All Levels refer to Ordnance Survey Datum, Malin Head.
 (iii) DO NOT SCALE, use figured dimensions only, if in doubt ask.
 (iv) Hard copies, dwf and pdf will form a controlled issue of the drawing. All other formats (dwg etc) are deemed to be an uncontrolled issue and any work carried out based on these files is at the recipients own risk. RPS will not accept any responsibility for any errors from the use of these files, either by human error by the recipient, listing of the un-dimensioned measurements, compatibility with the recipients software, and any errors arising when these files are used to aid the recipients drawing production, or setting out on site.

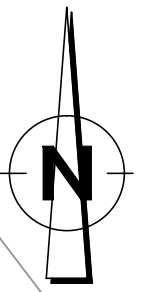
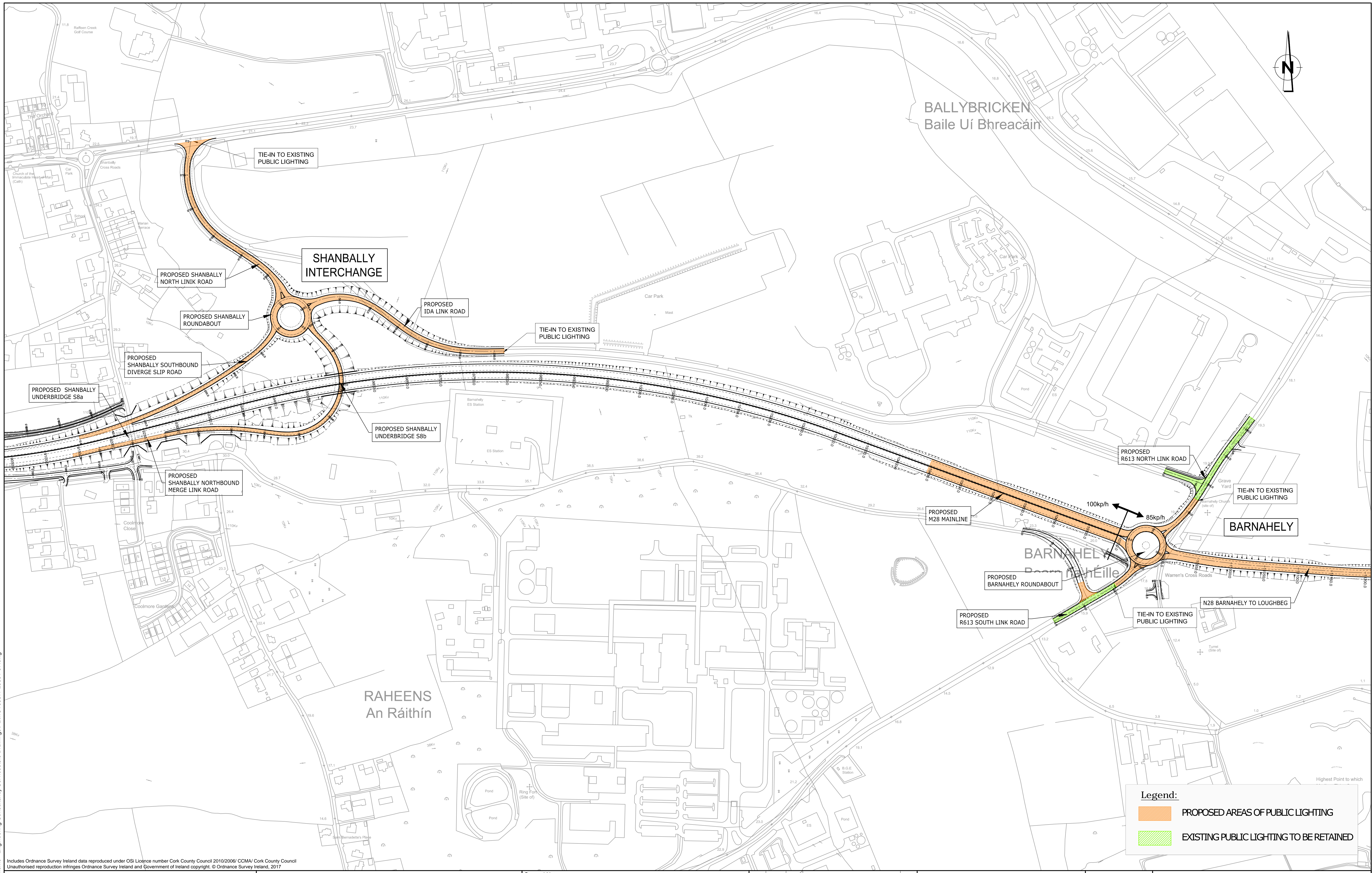
No.	Date	By	App	Amendment / Issue
F01	May '17	KT	LB	FINAL ISSUE



RPS
 Innishmore
 Ballincollig
 Co. Cork
 Ireland
 T +353 21 4665900
 W www.rpsgroup.com/ireland
 E ireland@rpsgroup.com

Drawn	KT	Project	M28 CORK TO RINGASKIDDY PROJECT		
Checked	LB	Title	PROPOSED PUBLIC LIGHTING		
Approved	LB		Sheet 3 of 5		
Date	Apr. 2015	Job No.	MCT0597	File Ref.	MCT0597PL0001-07.dwg
Scale	1:5000 @ A3 1:2500 @ A1	Drg. No.	PL0003	Rev.	F01

R:\MCT0597 - N28 Upgrade Scheme - Engineering Consultancy Services\6.0 Drawings\PL\MCT0597PL0001-07.dwg



Legend:


- PROPOSED AREAS OF PUBLIC LIGHTING
- EXISTING PUBLIC LIGHTING TO BE RETAINED

Includes Ordnance Survey Ireland data reproduced under OSI Licence number Cork County Council 2010/2006/ CCMA/ Cork County Council
 Unauthorised reproduction infringes Ordnance Survey Ireland and Government of Ireland copyright. © Ordnance Survey Ireland, 2017

Client



TII
 Bonneagar Iompair Éireann
 Transport Infrastructure Ireland



Cork County Council
 National Roads Office,
 Richmond,
 Glanmire,
 Co. Cork. Tel. No: (021) 4821046
 Fax. No: (021) 4866209

General Notes

- (i) This drawing is the property of RPS Consulting Engineers, it is a confidential document and must not be copied, used, or its content divulged without prior written consent.
- (ii) All Levels refer to Ordnance Survey Datum, Malin Head.
- (iii) DO NOT SCALE. Use figured dimensions only. If in doubt ask.
- (iv) Hard copies, dwf and pdf will form a controlled issue of the drawing. All other formats (dvg etc) are deemed to be an uncontrolled issue and any work carried out based on these files is at the recipients own risk. RPS will not accept any responsibility for any errors from the use of these files, either by human error by the recipient, listing of the un-dimensioned measurements, compatibility with the recipients software, and any errors arising when these files are used to aid the recipients drawing production, or setting out on site.

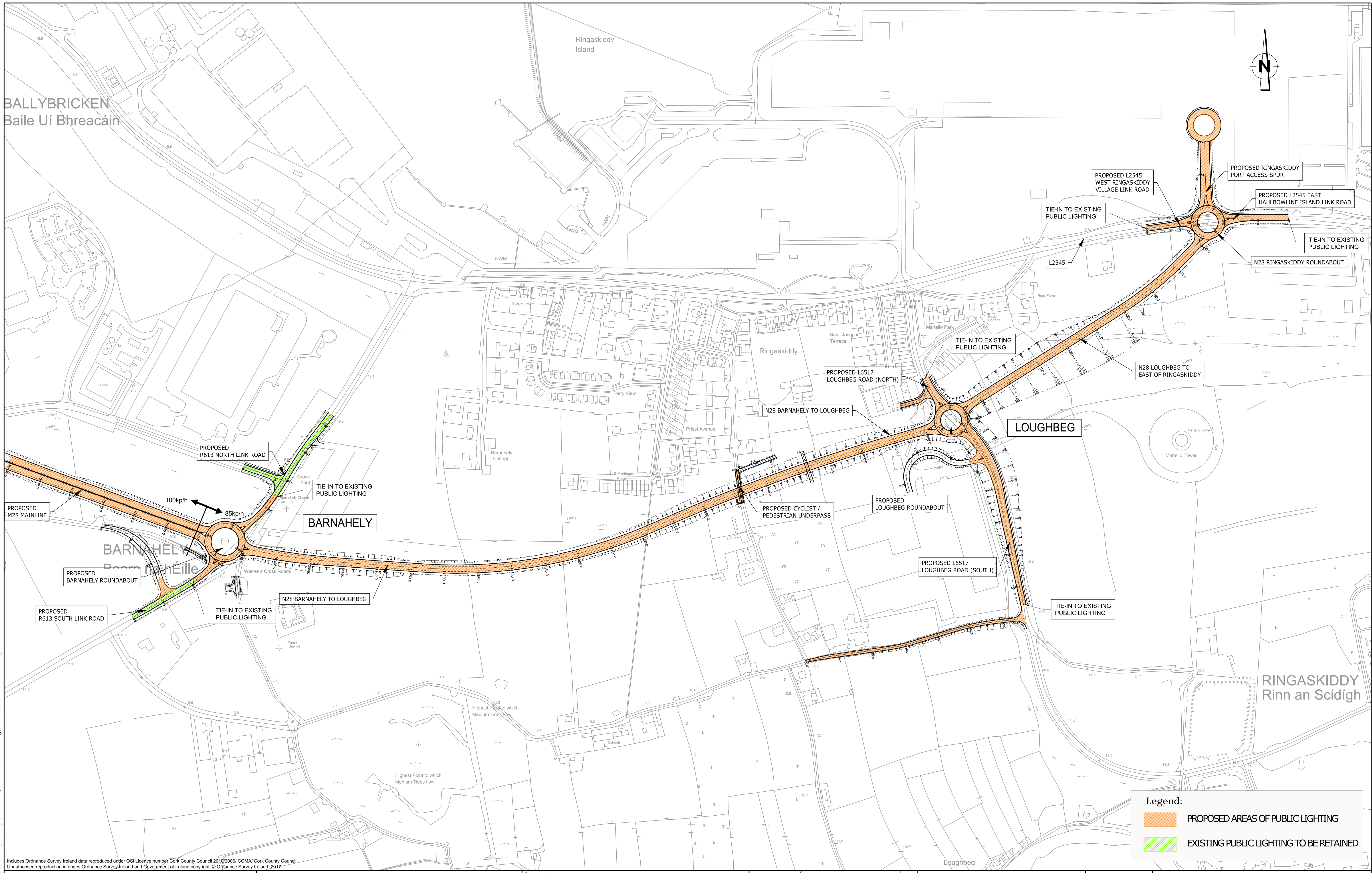
No.	Date	By	Amendment / Issue	App
F01	May '17	KT	FINAL ISSUE	



RPS
 Innishmore
 Ballincollig
 Co. Cork
 Ireland
 T +353 21 4665900
 W www.rpsgroup.com/ireland
 E ireland@rpsgroup.com

Drawn	KT	Project	M28 CORK TO RINGASKIDDY PROJECT		
Checked	LB	Title	PROPOSED PUBLIC LIGHTING		
Approved	LB		Sheet 4 of 5		
Date	Apr. 2015	Job No.	MCT0597	File Ref.	MCT0597PL0001-07.dwg
Scale	1:5000 @ A3 1:2500 @ A1	Drg. No.	PL0004	Rev.	F01

R:\MCT0597 - N28 Upgrade Scheme - Engineering Consultancy Services\6.0 Drawings\PL\MCT0597PL0001-07.dwg



Legend:


- PROPOSED AREAS OF PUBLIC LIGHTING
- EXISTING PUBLIC LIGHTING TO BE RETAINED

Includes Ordnance Survey Ireland data reproduced under OSI Licence number Cork County Council 2010/2006/ CCMA/ Cork County Council. Unauthorised reproduction infringes Ordnance Survey Ireland and Government of Ireland copyright. © Ordnance Survey Ireland, 2017

Client



TIIV
Bonneagar Iompair Éireann
Transport Infrastructure Ireland



Cork County Council
National Roads Office,
Richmond,
Glanmire,
Co. Cork. Tel. No: (021) 4821046
Fax. No: (021) 4866209

General Notes

(i) This drawing is the property of RPS Consulting Engineers, it is a confidential document and must not be copied, used, or its content divulged without prior written consent.
(ii) All Levels refer to Ordnance Survey Datum, Malin Head.
(iii) DO NOT SCALE. Use figured dimensions only. If in doubt ask.
(iv) Hard copies, dwf and pdf will form a controlled issue of the drawing. All other formats (dwg etc) are deemed to be an uncontrolled issue and any work carried out based on these files is at the recipients own risk. RPS will not accept any responsibility for any errors from the use of these files, either by human error by the recipient, listing of the un-dimensioned measurements, compatibility with the recipients software, and any errors arising when these files are used to aid the recipients drawing production, or setting out on site.

No.	Date	By	Amendment / Issue	App
F01	May 17	LB	FINAL ISSUE	



RPS
Innishmore
Ballincollig
Co. Cork
Ireland

T +353 21 4665900
W www.rpsgroup.com/ireland
E ireland@rpsgroup.com

Drawn	KT	Project	M28 CORK TO RINGASKIDDY PROJECT		
Checked	LB	Title	PROPOSED PUBLIC LIGHTING		
Approved	LB		Sheet 5 of 5		
Date	Apr. 2015	Job No.	MCT0597	File Ref.	MCT0597PL0001-07.dwg
Scale	1:5000 @ A3 1:2500 @ A1	Drg. No.	PL0005	Rev.	F01

R:\MCT0597 - N28 Upgrade Scheme - Engineering Consultancy Services\6.0 Drawings\PL\MCT0597PL0001-07.dwg